



# RAINBOW CONNECTION



## The Garden State Emmaus Community Newsletter

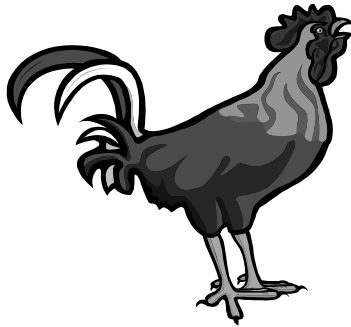
### Walk #38

#### Men's Weekend:

March 15 - 18, 2012

#### Women's Weekend:

March 22 - 25, 2012



**Team Orientation:** January 7, 2012

**Fourth Day:** March 31, 2012

#### Please Note:

***Pilgrim Registration Forms are due  
no later than January 7, 2012.***

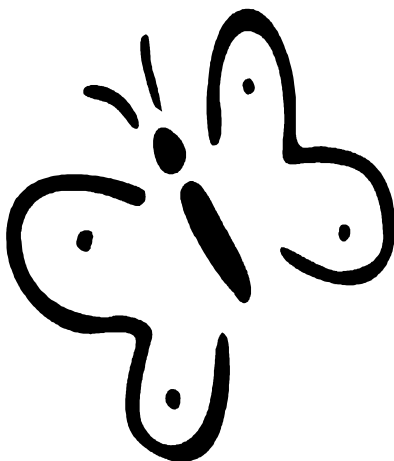
### Flight #38

#### Girl's Weekend:

May 3 - 6, 2012

#### Boy's Weekend:

May 17 - 20, 2012



**Team Training:** April 13-15, 2012

**Next Steps:** June 9, 2012

**Team Orientation:** February 25, 2012

© Copyright 2003 by  
Garden State Walk to  
Emmaus, Inc.  
All Walk to Emmaus  
logos are trademarks  
owned by The Upper

#### Please Note:

***Caterpillar Registration Forms are due  
no later than April 13, 2012.***



## Recent Testimonies:

We so often turn to God in prayer when we want or need something, and not often enough for thanks and praise. In this case, I want to thank God for the healing he worked through my Walk to Emmaus #37.

Prior to my walk I had been diagnosed with a number of serious vision problems, and chief among them was a new diagnosis (late Sept.) of macular degeneration. I was told by my ophthalmologist and my retina specialist that it did not look good and that in the vast majority of cases like mine (at a relatively young age of 51), the condition typically progresses, eventually leading to significant vision loss and possibly even blindness. Needless to say, I was very troubled by this going into my walk.

During my walk, there were various prayers raised for me. My table leader also led a prayer for me with the members of my table group.

Shortly after the walk and after another surgery for cataracts in January, in subsequent visits to my eye specialists the reports on the macular degeneration and on my eyesight in general, were more and more positive. This past August, I was told by my ophthalmologist and by my retina specialist that my retina and eye health have improved significantly (and the macular degeneration had receded), to the point they both said they are no longer concerned about it. And my vision is now almost 20-20. When I asked if it is unusual for this kind of improvement to occur in such a case, they both said that it is unusual, but not unheard of. But they each seemed rather surprised at the result.

I don't know if this falls into the category of a miracle per se, but I do clearly consider it an answer to prayer!

I wanted to use this forum to praise God for the way he hears and answers our prayers. And, also, to mention that God has each of us on our particular walk for a reason, and apparently one of the key reasons I was there was for healing. We typically think of these walks as preparing us for future leadership for His purposes. But we may be there for other reasons too, such as healing as a testimony to the power of prayer.

It may become discouraging at times to some in the Emmaus community when there might be low turnout or cancellations for various walks, but I believe we can rejoice in the fact that the Lord is still working through this ministry in powerful ways!

Scott Martin  
NJ Emmaus Walk #37



**Today it hit me hard as I worked my job.**

A young lady in the congregation I am a part of made a big decision. She being rated number 4 in the State of New Jersey as an Alto singer chose to skip a choir concert at our high school to be a caterpillar during this upcoming girls Chrysalis

weekend. I talked to her and heard her tears as she had to choose. I spoke to her grandmother who also had her heart torn out as this young lady made a decision to be with Christ instead of following what others would tell her to do being a part of the choir concert at school. There is a lot of undue pressure on these kids in Audubon to perform.

I write this with "allergies" as I first experienced at Seaville when another young lady professed her love for Christ. It totally amazes me how Our God is at work with all these kids have to face. Every time the Audubon Youth Group Worship Team does their own worship each third Sunday, I cry like a baby. I used to hide it but now I have found they are tears of joy knowing Our God is at work. So when you see the bald headed guy at Seaville, being who I was, humbled and crying like a baby, know God is at work. These are not tears or sobbing of sorrow, they are tears of amazement with how Our God is at work every day with kids. Know that she made a decision to spend time with Christ even at the expense of choir and pressure from her peers. It speaks to me as to how sure she is ready to spend time with God.

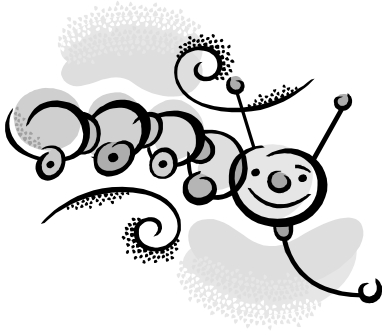
I can preach and say things I am lead to say from the pulpit, but every time I see a child touched by Christ, I am humbled knowing how great is Our God.  
How Great is Our God!

Thanks,  
Barry E. Zane Sr.



Although I attended the 26<sup>th</sup> Garden State Walk to Emmaus I must say that it all started with the Garden State Lighthouse Chrysalis. My daughter attended her flight in the fall of 2002, and in the fall of 2003 she co-sponsored my wife and I on our walks.

In 2004 my daughter was then asked to join the Chrysalis Board, and several board members were from our area and they started meeting at our church. I was a trustee in the church so I would open the building for them and wait for the meeting to end to lock up. After a couple meetings I was asked to fill a vacant seat on the board and have been on and off the board since then.



I have served on both Emmaus & Chrysalis teams and truly feel that they all been a blessing to me and my faith walk. However I really enjoy seeing what a Chrysalis Flight does for young adults as they grow in their faith and their love for Christ.

Bill Whittles

## Why I serve by Tom Austin

I love to serve on team for Chrysalis.  
I am inspired by the deep faith of the young adults,  
rejuvenated by their youthful energy,  
nourished by their witness,  
empowered by their commitment,  
impressed by their desire to learn,  
and renewed by their love.  
I leave the weekend completely exhausted  
but filled to overflowing with hope.  
How good is that?

### **Did you know.....**

that Chrysalis first began in 1984 after numerous requests were received to start a youth version of Walk to Emmaus?

that the Garden State Lighthouse Chrysalis started in March of 1998?

that Chrysalis is open to high-school age (those who have completed the ninth grade) and young adults from ages 14 to 25?

that Chrysalis has 15 talks on its weekend, 5 given by clergy, 5 given by adults and 5 given by youth?



that Chrysalis has a night of silence on Friday night, not Thursday night?

that Chrysalis weekend celebrates the three stages of the life of a butterfly, Friday the participants are caterpillars, on Saturday they are chrysalises and on Sunday they are butterflies ready to “Fly With Christ”?

that Chrysalis conference room team consists of youth and adults and that each table has one adult table leader and one youth table leader?

that the last talk on Friday night, “Prodigal”, is given in the tabernacle and not in the conference room?

that Chrysalis celebrates with a special “mime communion”? Want to know more about it, sign up to serve on team (it is counted towards progressive servanthood along with Emmaus)!

that Chrysalis has a background Agape team that helps distribute agape made or brought by Garden State Walk to Emmaus members?

that Chrysalis has an additional background team called “logistics”?

that Chrysalis has send off on Thursday night, Candlelight on Saturday night and closing on Sunday?

that Chrysalis has a reunion card that is shared throughout their “next steps” just as Emmaus members share during their “fourth days”?

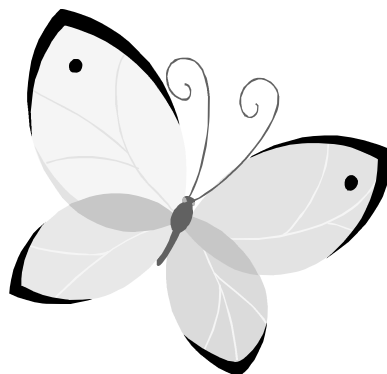
that Chrysalis young people attend gatherings called “RUSH”?

that all members of the Garden State Lighthouse Chrysalis and the Garden State Walk to Emmaus community are eligible to serve on a Chrysalis team or on the Chrysalis committee?

that **ALL Walk to Emmaus** members are encouraged to sponsor youth to attend a weekend, to support youth at candlelight, and to welcome youth into the Garden State Walk to Emmaus community at closing? Hope to see you

## Do you have a big

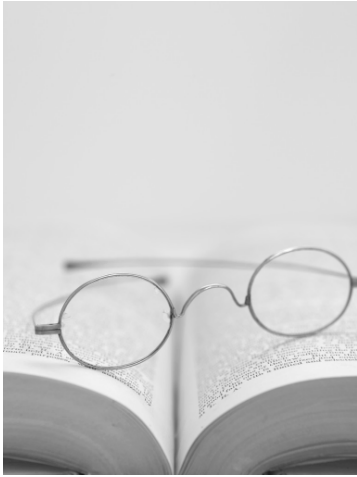
Many of us have big butts; butts. But, before you stop gross think about these butts: I would be more involved in work more, my favorite TV



## BUT?

some of us have several big reading because I’m being

Emmaus BUT; I need to show is on, the kids have



practice, I gotta Tweet something, it's such a beautiful day, I'm not in the mood, I deserve a break today, I gotta Farmville, I'm too tired, the game is on, I came last time. And the biggest one.....I don't have enough time!

Let's be honest here, you would never say any of these out loud, but you have thought them at one time or another. The tragedy is, if enough people have big BUTs the Emmaus community suffers. The biggest area that the community suffers in is sponsoring. Have you ever not sponsored someone by saying to yourself... but; it's too expensive, I can't get motivated, I don't have all the answers, I'm afraid, that's not my gift, I don't know where to start. And the biggest but of all is ..... someone else will do it.

The Lord has given us a simple mission in the Walk to Emmaus, to encourage church leadership in Christians through life, study and action. That is the why we are the Garden State Emmaus Community. If your BUT is bigger than the why, then your but is too big.

Walk to Emmaus is a grassroots organization. That means we all are on equal footing. No one is greater than anyone else, no matter where they are serving in the community. You can think of the Board of Directors as the steering committee, but the power comes from the community at large. The Board can make plans, schedule dates, select leaders, run trainings, BUT without the backing of the community nothing happens. In other words, **you are Emmaus**, no buts about it. Let's start today to shrink the butts. No ifs, ands, or.....you know.

Arthur Schalick

Garden State Walk to Emmaus Community Lay Director

Class of 2011

P.S. I would like to acknowledge Sermon Spice for the inspiration for this article

**I serve on Chrysalis and Emmaus for the many blessings I receive each time I say yes. I have been on a lot of flights and Walks and not one has been the same. Each time I have learned something new and come away with a closer more personal walk with God. There have been times when unexpected experiences have occurred, but through them I could feel the Holy Spirit guiding, comforting, and loving me each step of the way. My own walk was wonderful and serving on each team has**



been rewarding and amazing. I pray that everyone that says yes to serve will come away renewed and Blessed.

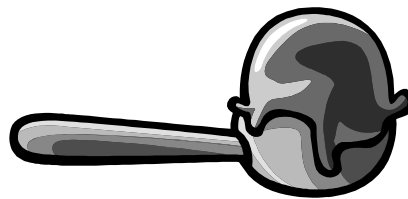
**Fly with Christ/ DeColores !  
Pat Henry**

## ICE CREAM FLAVORS

K H B T H S K U S A H X C P S  
Z M H G E T A L O C O H C E K  
C T V Q F R V B P P D P F A C  
O M B G L A J A A U E T T N A  
F G M Z T W O X N A X K D U R  
F O A D F B V Z C I H Y G T T  
E W F P G E J H M V L V G B E

E G K R F R B C O W R L W U S  
F U D G E R I P P L E U A T O  
C H E R R Y V A N I L L A T O  
R O C K Y R O A D Y K C E E M  
X M I A P V H N K X T E K R A  
E N A C E P R E T T U B W Y U  
C T J Q J P A B Y N Q P N O Q  
K Z Z D V L O R N J A W O W A

PEACH  
PEANUTBUTTER  
ROCKYROAD  
STRAWBERRY  
VANILLA



As a senior citizen, I am excited to see our youth touched by the Holy Spirit as Agape Love is showered upon them on a Chrysalis Flight. In this fast paced world we live in, how often do they get a chance to spend 72 hours apart and reflect on where they have been and are going and their relationship with Christ.



Over and over again, as I have served, I see seeds planted, lives touched, and life changing decisions made and know that Chrysalis is a valuable time for today's youth.

My prayer is that many more youth will respond, say YES, and experience Chrysalis for themselves and that our Emmaus Community will support them with their prayers, service and agape gifts.

Lucille

Chrysalis has a very special place in my heart because my daughter first attended a Chrysalis Flight and then sponsored both Bill and I to attend Emmaus. Without her positive experience we would not be a part of either Chrysalis or Emmaus. All three of us have enjoyed serving on Chrysalis teams (Laura has served every year since her flight!). I have especially enjoyed serving on team to experience the joy that the teens exude during and after their flights. It has been made special because Laura and I have been able to serve together for the past few flights and I am blessed to be able to feel God's love throughout the team and the flight.

Jill Whittles



Serving on a Chrysalis flight = planting seeds, seeing God in Action, eating comfort food all weekend, transforming lives, being energized, watching stunned faces at Candlelight, making friends from all over south Jersey, working as a unit to glorify Jesus, hearing how teens were touched when they share on Sunday afternoon, and

being blessed. Every time I serve on team, I'm showered with God's blessings. It's an experience that keeps me going.

## Dee Dee Langshaw

Intercessory prayer is vital part of the Emmaus Community. Prayer is incorporated into team selection, sponsorship, and in finding pilgrims. We pray for each other, the walks, and the team, and we also pray for the sponsors and the pilgrims who will be joining the community. Prayer is also vital for those in our community who request prayer for special needs or other difficulties.

Prayers can be said anywhere! You can pray at home, walking, working, driving, playing, or in the prayer room during the walks. Please consider being a part of this vital ministry. There are three ways Intercessory Prayer is utilized in the Emmaus Community.....

### 1. Prayer Chain

Emmaus has a group of dedicated prayer warriors who will pray for individuals as they are made aware of them thru the use of an email prayer chain. You do not need to know who the person is in order to pray for them - God knows & loves them.

If you have a prayer request, send your request to [prayer@gardenstateemmaus.org](mailto:prayer@gardenstateemmaus.org) and it will be sent throughout the community as soon as possible.

If you would like to join the prayer chain, send an email to [prayer@gardenstateemmaus.org](mailto:prayer@gardenstateemmaus.org).

### 2. Prayer Charts

Prior to our walks, 72 hour prayer charts are created and brought to team orientation, team training, and sponsor's hour. The prayer charts will also be emailed to those on the email chain and put on the 3 Day Prayer Vigil Website (<http://www.3dayol.org/Vigil/GetComm.phtml>).

### 3. Prayer for Other Walks

Our Agape Coordinator keeps in touch with other communities across the globe and sends out prayer reminders when these communities are holding their walks. If you would like to be added to the prayer chart that is displayed in the conference room, you can sign up for a time slot on the 3 Day Prayer Vigil Website - <http://www.3dayol.org/Vigil/GetComm.phtml>.

Even if you don't sign up for a time slot, remember to pray for our brother's and sisters in Christ in Africa and other national & international locations as they hold their walks.

DeColores, Kim Bakely, GSW2E #31 Prayer Coordinator

At the writing of this article the nominating committee has four confirmed nominees for the 2014 class of the Garden State Walk to Emmaus Board of Directors. They are **Ed Morris, Cheri Craft, Darlene Chatten and Cheryl Czech**. I am excited that they have agreed to serve on the board, and I know their experience, gifts, and talents will be an asset to the board and the community. This leaves two open seats in the 2014 class. The nominating committee will continue to search for persons to complete the class up until the election at the December 3rd Gathering at Moorestown FUMC at 11 am. Just before the election we will take nominations from the floor, but the nominee would have to be present to accept the nomination or a letter or phone call of acceptance would be needed if they were not at the Gathering. There is no limit to the number of nominees. The directors will be elected from the nominees by a popular

vote of the Emmaus members present. Contact me, Danny Clark, Mike Denelsbeck, Cheri Craft, or Barbara Engelbrecht if you or someone you know would like to be a part of the new Board of Directors.

Art Schalick  
Garden State Walk to Emmaus Community Lay Director

This edition of the Emmaus Community newsletter has been devoted to you, the community. Inside you will find walk and flight information as well as testimonies from community members. Please take the time and read through what it is YOU have to say. We will always appreciate receiving your letters and articles to include in the newsletter.  
Thank You

If you no longer wish to receive mailings from Garden State Walk to Emmaus, please contact Terri Pagani (pagani5@comcast.net, 609-877-7788, or mail your request to 55 Southampton Dr., Willingboro, NJ 08046).

Garden State Walk to Emmaus  
55 Southampton Dr.  
Willingboro, NJ 08046

Non-Profit Organization  
U S Postage Paid  
Permit No. 188  
Cinnaminson, NJ 08077

Return Service Requested